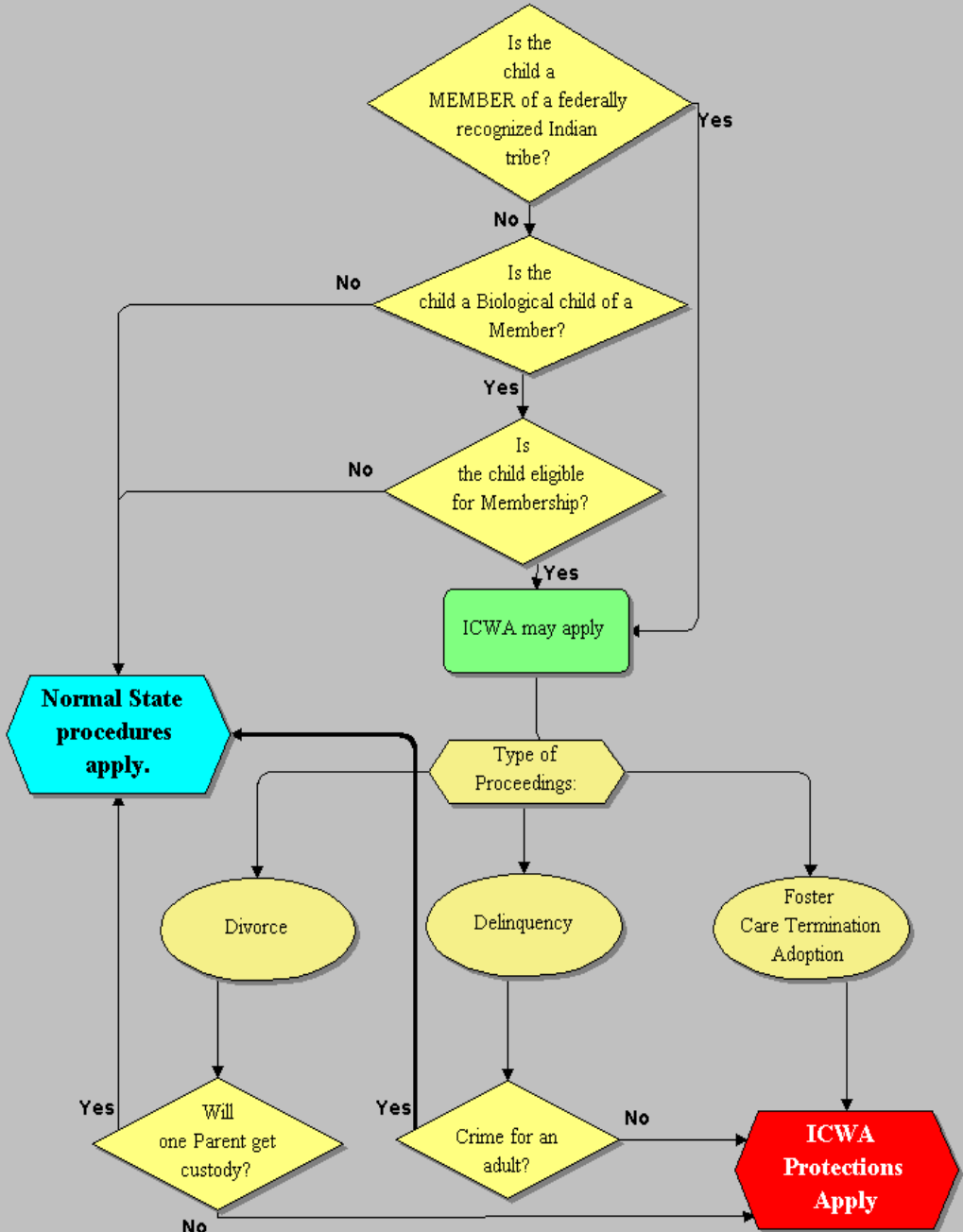
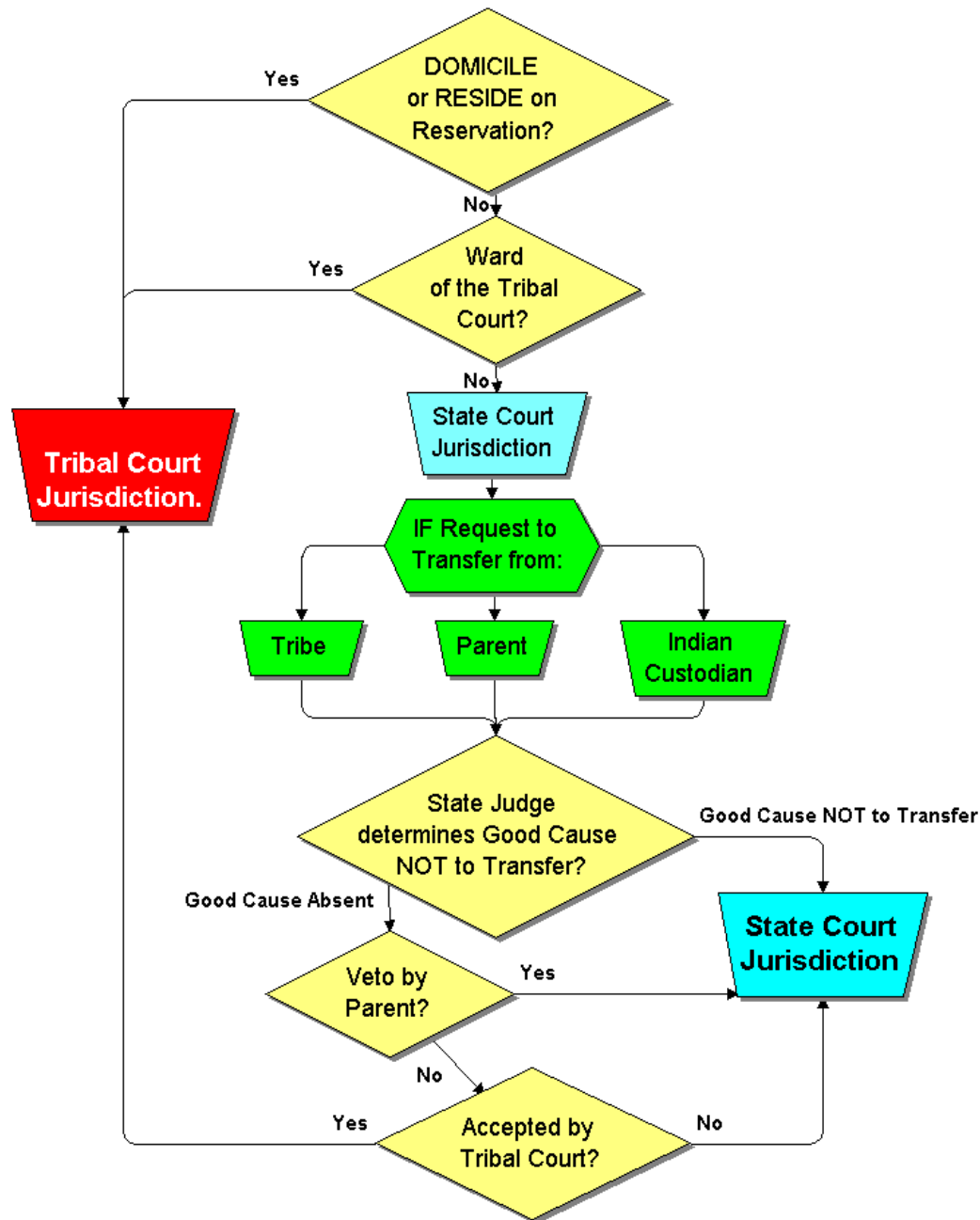


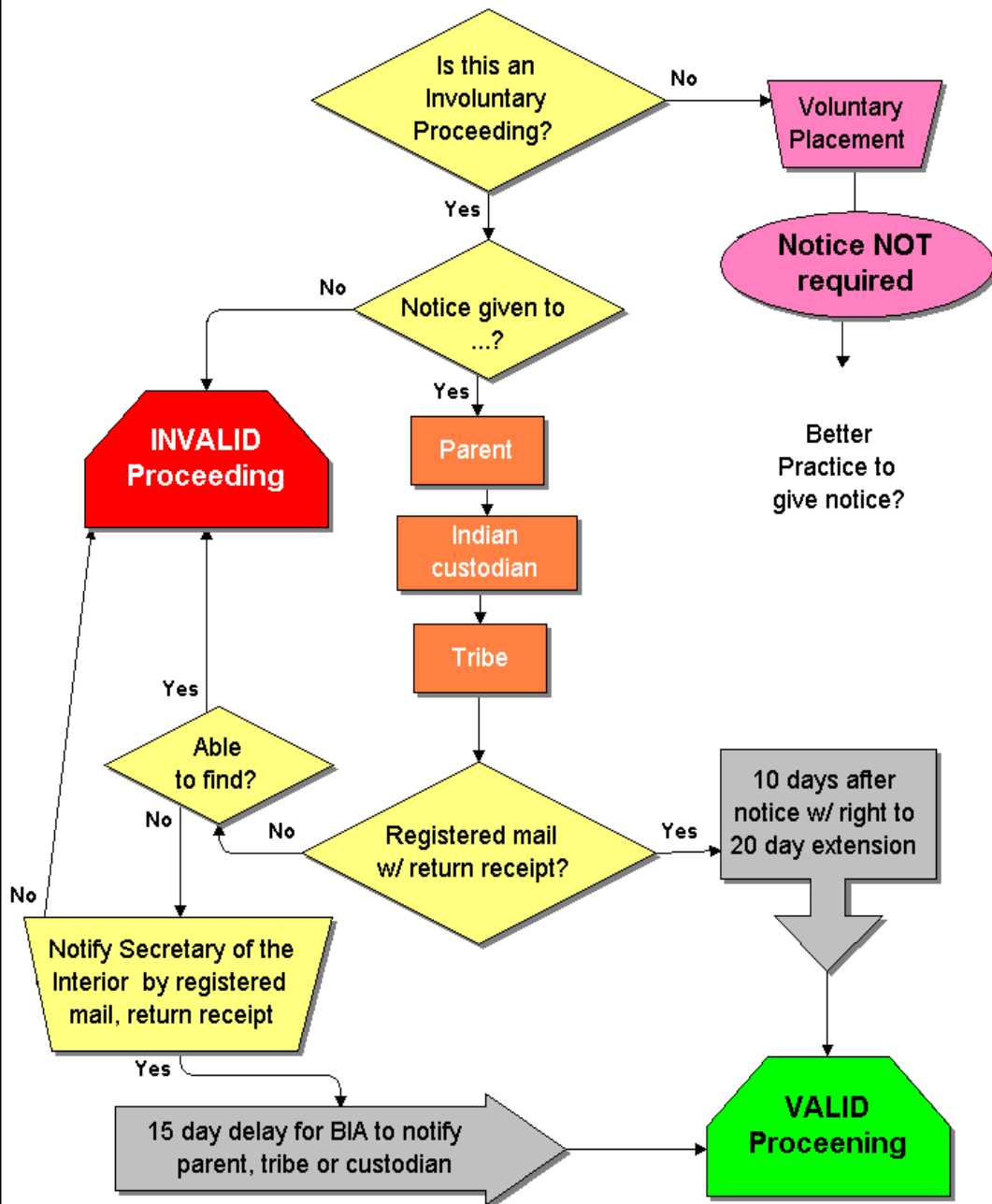
Will the ICWA apply to this case?



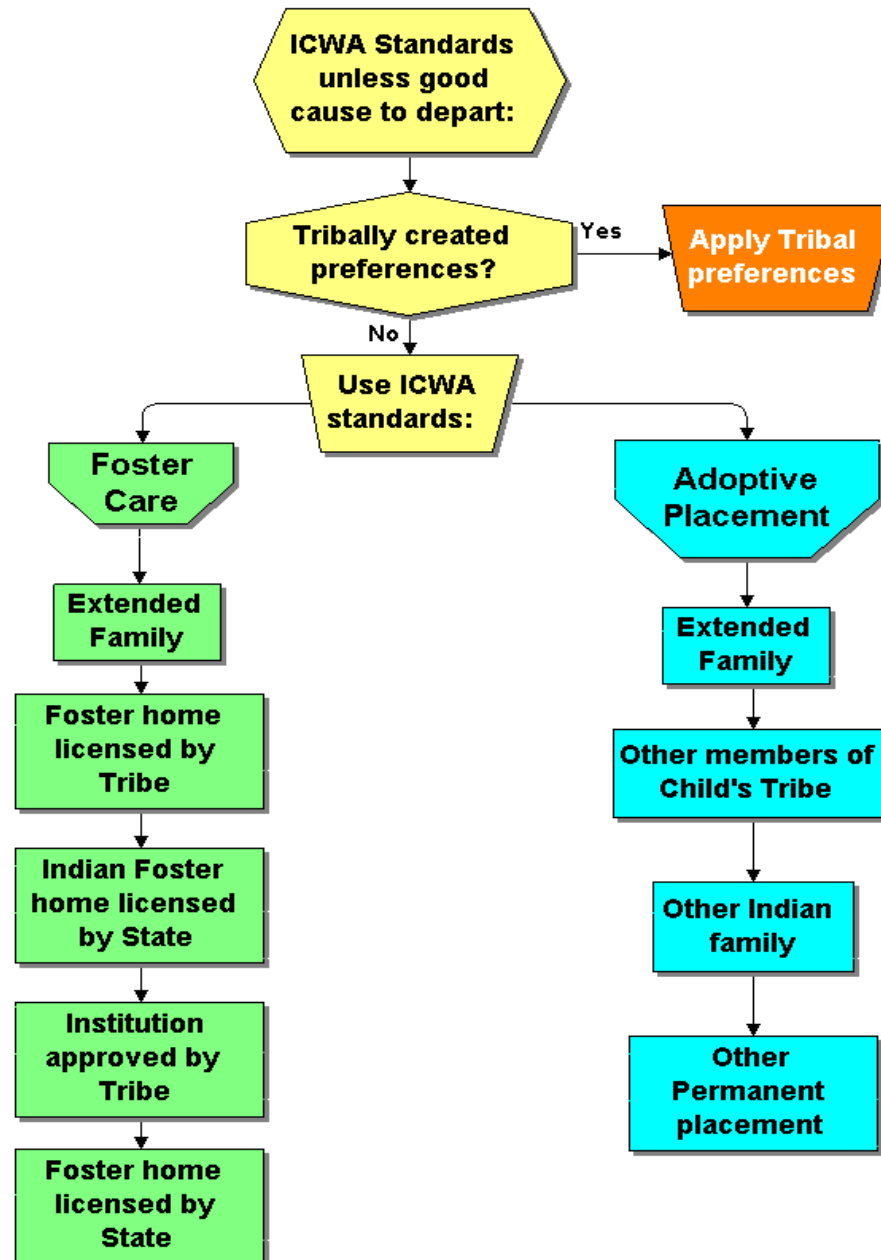
Jurisdiction & the ICWA (Sec 101) (non PL 280)



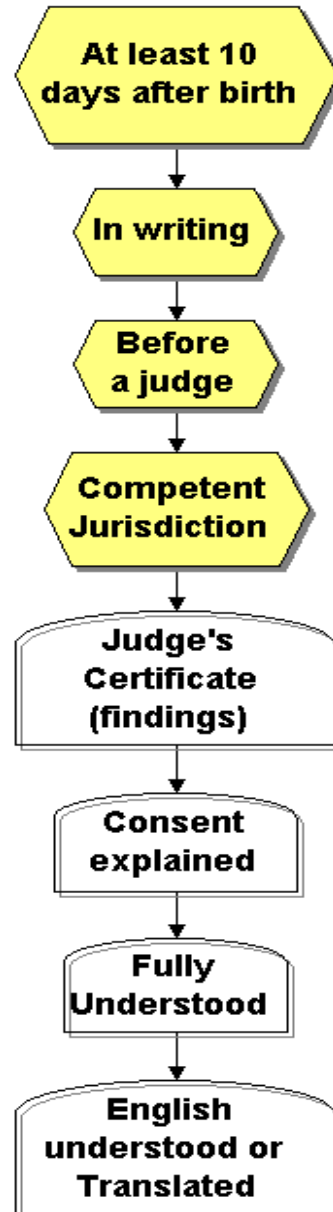
Notice Requirements of ICWA (Sec 102)



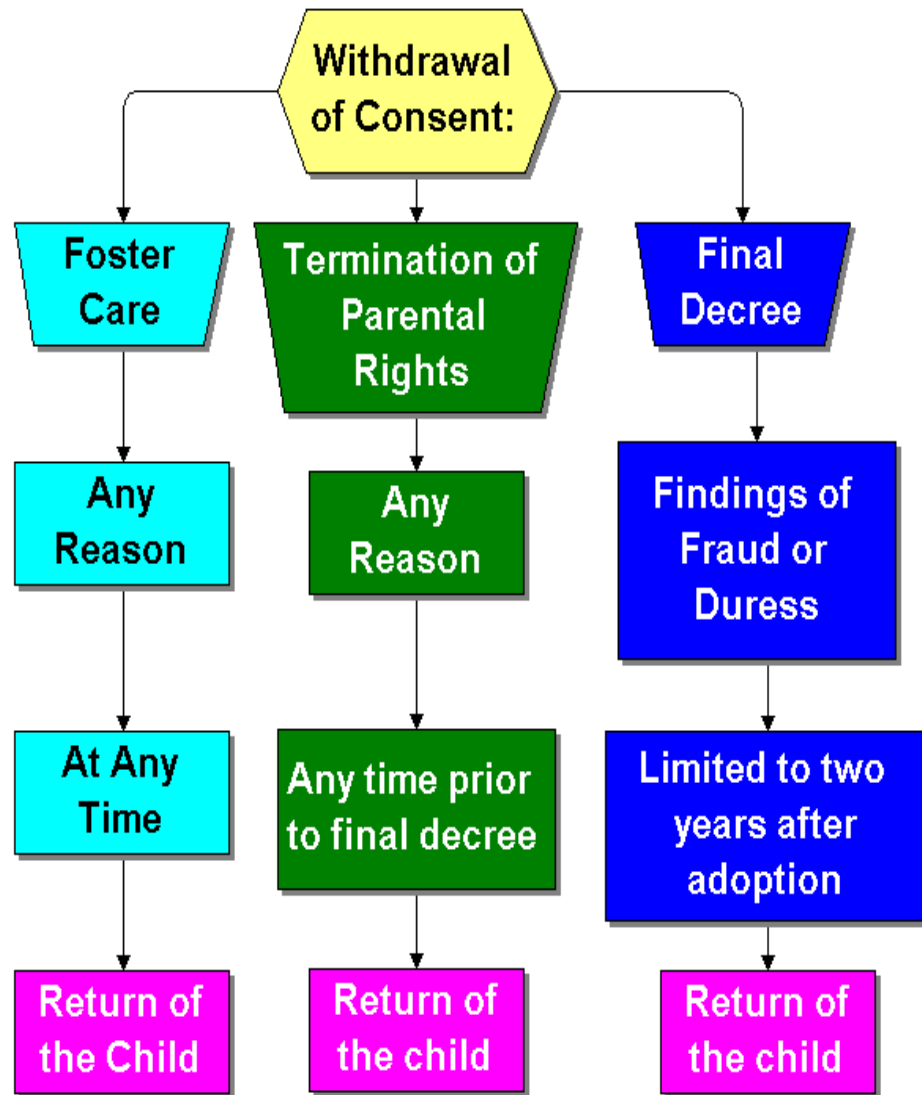
Placement Preferences (Sec 105)



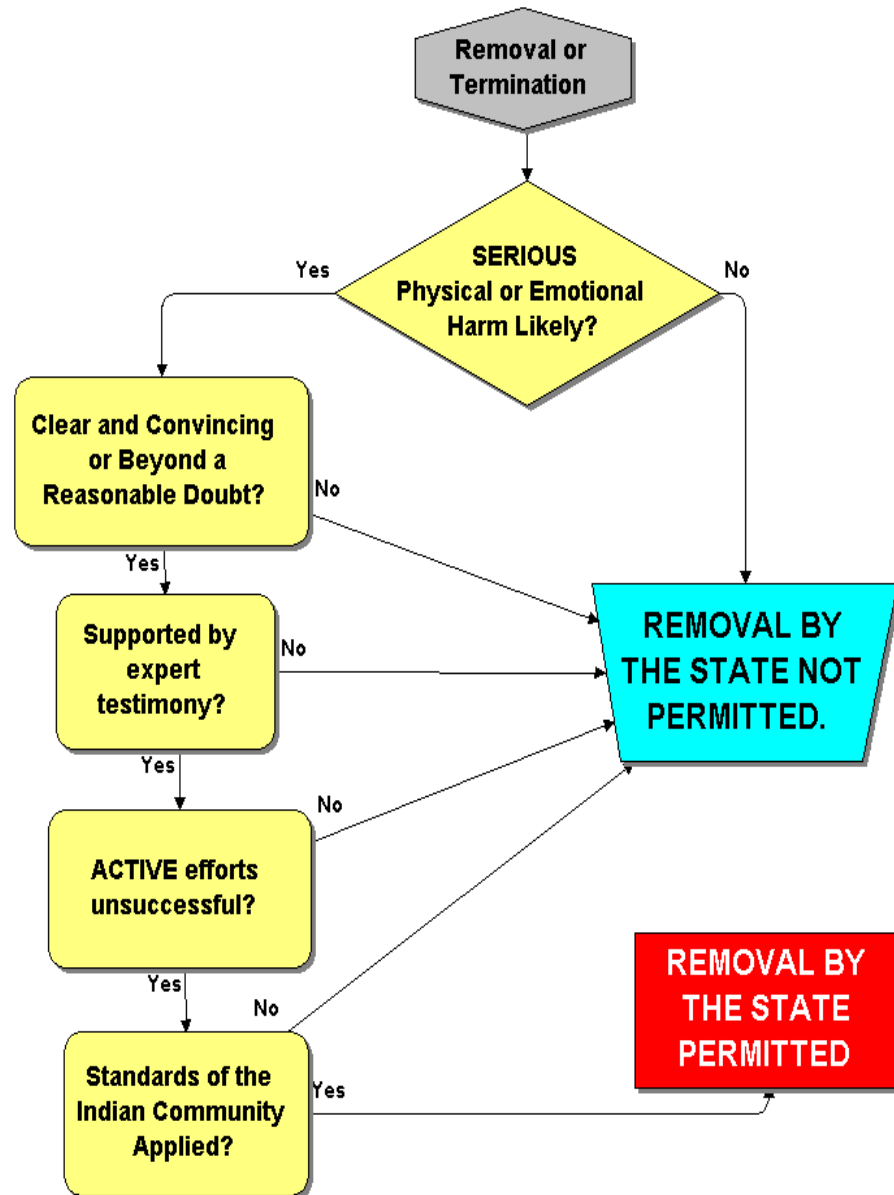
Voluntary consent to TPR



Withdrawal of Consent (sec 103)



Checklist for Removal or Termination (Sec 102)



Emergency Removal (Sec 112)

