

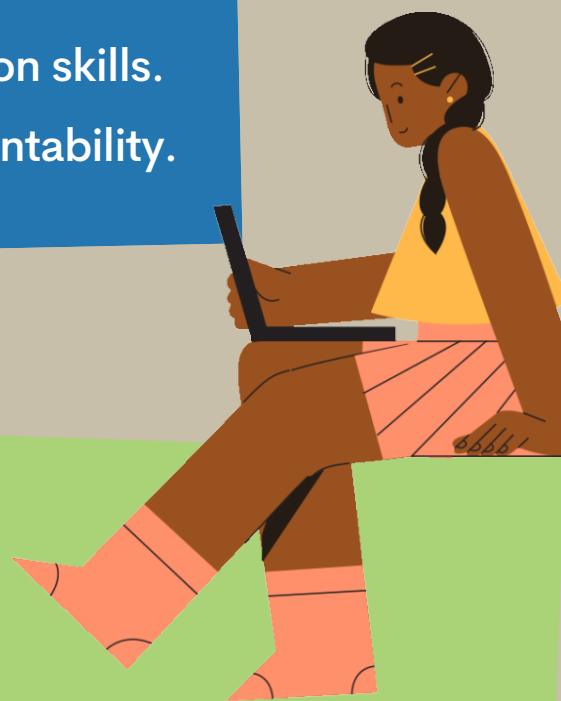
A CHECKLIST FOR

Emerging Leaders

Tips & resources to promote the development of critical leadership skills, and ways child welfare programs can support your growth.

TIPS TO DEMONSTRATE LEADERSHIP

- Be collaborative.
- Have a clear & compelling vision.
- Strive for constant learning & self-improvement.
- Empower others.
- Exhibit strong & effective communication skills.
- Act with integrity & demonstrate accountability.



ORGANIZATIONAL SUPPORTS

- Invest in leadership development & training.
- Provide mentoring opportunities for inspiration & coaching.
- Give timely feedback & recognition.
- Lead by example in the workplace with a DEI (diversity, equity, and inclusion) lens.
- Be supportive personally & professionally (including financially, benefits, opportunities for growth & work-life balance).
- Empower & provide the tools needed to succeed.



RESOURCES TO DEVELOP CRITICAL LEADERSHIP SKILLS

- Use NCWWI's Learning & Living Leadership Tool Kit to assess your leadership strengths and areas for development and guide you in writing a competency-based leadership development plan with activities to meet your needs, interests, learning style, time constraints, and desired proficiency level (executive, manager, supervisor, caseworker).
- Review 6 Ways to Keep Learning.
- Join CWLA's Emerging Leader Committee.
- Apply for the Minority Professional Leadership Development Program.

